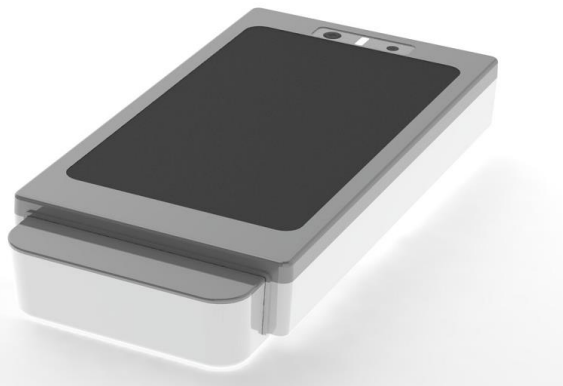


Facial Recognition Authentication Xantry 100

PARTNERSHIP

We are actively looking for partnership with potential companies who believe in working together to bring our collective capabilities to the next level. We welcome

- Companies looking to integrate Xantry into their existing access control or attendance systems.
- Companies wishes to represent Xantry.
- Companies wishes to invest in the development of Xantry.



APPLICATIONS

Xantry 100 is suitable for access control and attendance taking. It comes with fever detection option, the Xantry 100-T, that can help to screen and deny access of personnel with fever. Some of the areas of applications are:

- Access control in building turnstiles, office doors.
- Attendance taking in shops, companies and entrance of classrooms.

EXTENDABLE & CONFIGURABLE

The Xantry 100 can be configured to work as stand-alone or clients-server system. In stand-alone setup, access data is kept in individual system. In client-server configurator, the access data is centralised and kept in the server. While stand-alone is suitable for small and focus setup, client-server configuration serves better for larger compounds with distributed access control.

FEATURES

- Intuitive and easy to operate and maintain.
- Recognition speed and accuracy of < 1 sec and > 99% respectively.
- Configurable for stand-alone or networked operation of up to 100 nodes to one server.
- Capable to store up to 1000 facial information.
- Secondary authentication using PIN.
- Administrative software applications to administer and analyse access data.
- No facial image is stored for maximum privacy.
- Built-in relay to turn on relay for integration to turnstiles, gantries and doors.
- Fever detection option.

EASY TO INTEGRATE

With built-in relay and I/O controls, Xantry 100 is designed to integrate with gantry/turnstile/door systems. The built-in relay is capable to turn ON/OFF magnetic switches, while the serial messages and digital output signal are also available to indicate successful authentication.

EASY TO OPERATE

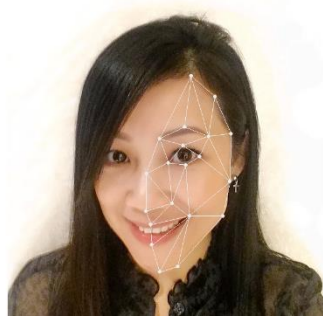
Both authentication and enrollment are simple, intuitive and guided by on-screen instructions. Easy-to-use software tools are also available for extracting and analysing data captured in the database.

CONTACT US

For more information on any of our products or services please visit us at:

www.motka.com.sg

If you need assistance, please drop us and email at:
info@motka.com.sg



PRIVATE AND SECURE

Faces learned are not saved as human-readable images. These images are encoded into a string of digital numbers and saved for identification later. PINs are also encrypted.

AI FACIAL RECOGNITION ENGINE

Xantry 100 adopts deep learning technology to achieve its highly accurate facial recognition engine. This engine can perform identification of a face under one second, with an accuracy of greater than 99%.

MANAGE AND ANALYSE YOUR DATA

A web-based software, Xantry Admin, enables authorised users to manage the database and perform essential analysis of the access data captured. With the search and filter functionalities, one can easily navigate to particular data of interest such as personnel gaining access after office hour, or certain locations. Data also can be exported in CSV format.

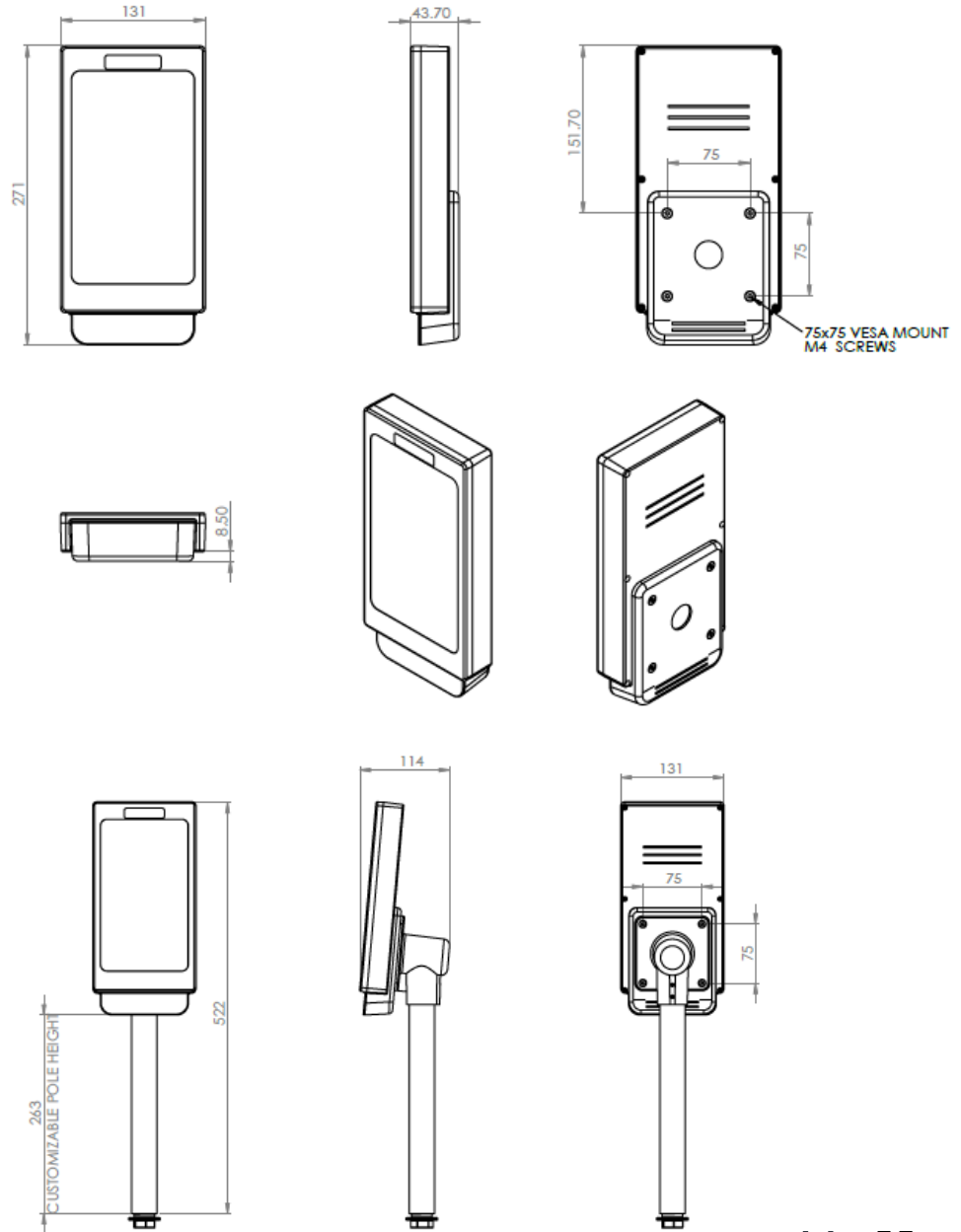
System Specifications

Models	Xantry 100	Xantry 100-T
Screen	7" touchscreen	
Interfaces	WiFi, Ethernet 100BaseT, Digital Output	
Identification Speed	< 1 sec	
Face Data Storage Capacity	1,000	
Detection Distance	200 – 450 mm	
Software Tool Support	Xantry Admin for data analysis	
Built-in Relay	Yes	
Fever Detection	No	Yes
Power Supply	+5V, 15W	
Size	131 X 271 X 43.7 mm (exclude mounting accessories)	
Weight	450 g	

Motka
We deliver promise

877, Woodlands Avenue 9
#10-272,
Singapore 730877

Mechanical Dimensions



Motka
We deliver promise

5432 Any Street West
Townsville, State 54321
Phone 555.543.5432
Fax 555.543.5433